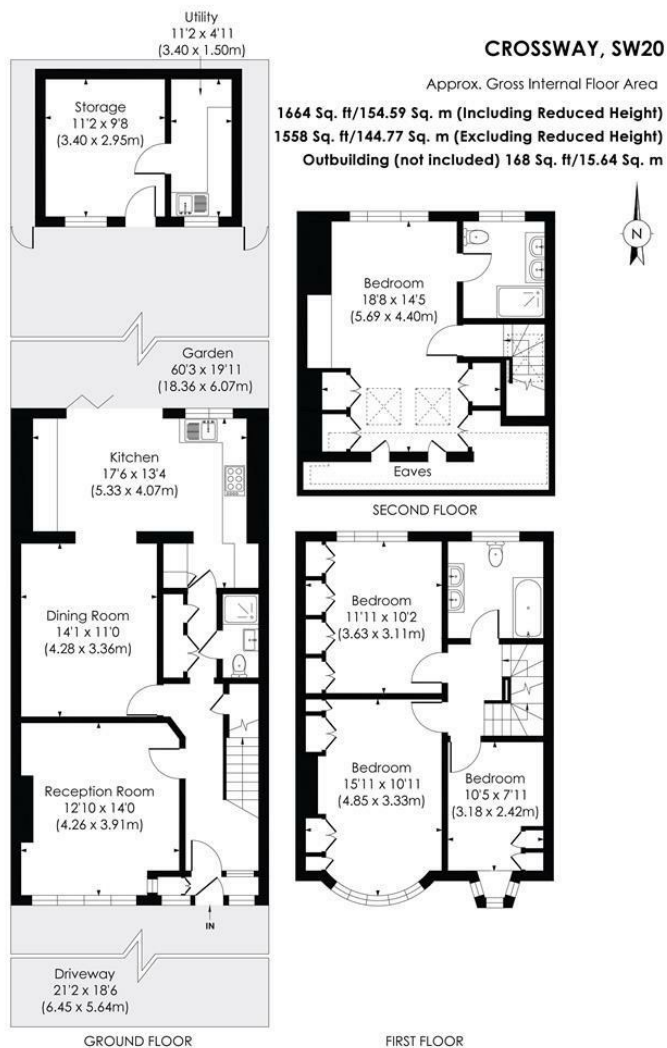


Crossway Raynes Park, SW20 9JA

£975,000 Freehold



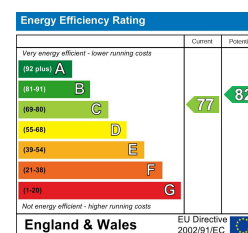
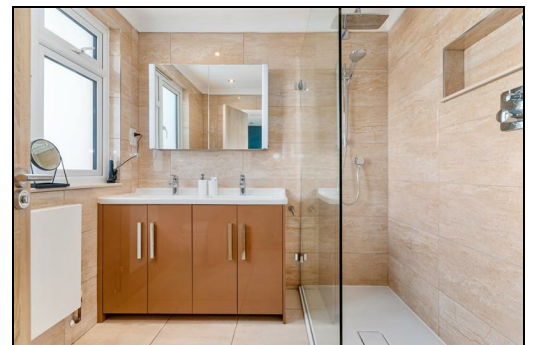
This fantastic **FOUR DOUBLE BEDROOM, THREE BATHROOM** fully extended 1930's mid terrace Blay house is conveniently located 0.7 Miles to Raynes Park Station and High Street, 0.6 Miles to Mostpur Park Station and Shops and 0.2 Miles to the open space of Cannon Hill Common. Exceptionally well-maintained throughout with off street parking to the front for two cars, a welcoming entrance hall with under stairs storage, downstairs w.c and shower room, a gorgeous separate front reception room with plantation shutters, a superb open plan kitchen/dining with granite worktops and bifolding doors, a fabulous landscaped garden with large storage shed, two modern bathrooms and the four double bedrooms with bespoke fitted wardrobes and plantation shutters.



© Pixangle Property Marketing Ltd. info@pixangle.com Tel: 0208 870 2118

pixangle PROPERTY MARKETING
 This floor plan has been prepared for the purpose of illustration only in accordance with the latest RICS code of measuring practice and is not to scale. All measurements and areas are approximate and whilst every effort has been made to ensure the accuracy of the plan contained here, no responsibility is taken for any error, omission or misstatement.

- Beautifully Maintained Four Double Bedroom - Three Bath/Shower Room
- 1664 sqft Fully Extended 1930's Blay House With Off Street Parking
- Landscaped Rear Garden With Large Storage Shed
- Exceptional Master Bedroom With En Suite
- Open Plan Kitchen/Dining Room With Bifolding Doors
- 0.6 Miles To Mostpur Park Station And Shops
- 0.7 Miles To Raynes Park Station And High Street
- 0.2 Miles To Cannon Hill Common
- EPC - C
- Council Tax Band - D



For Free Mortgage Quote and Best Mortgage Rates, call Ellisons Mortgage Advisor on 0208 944 9595



Although these particulars are believed to be correct, their accuracy is not guaranteed and they do not form part of any contract.

Celebrating 30 years of successful Sales and Lettings in Merton

